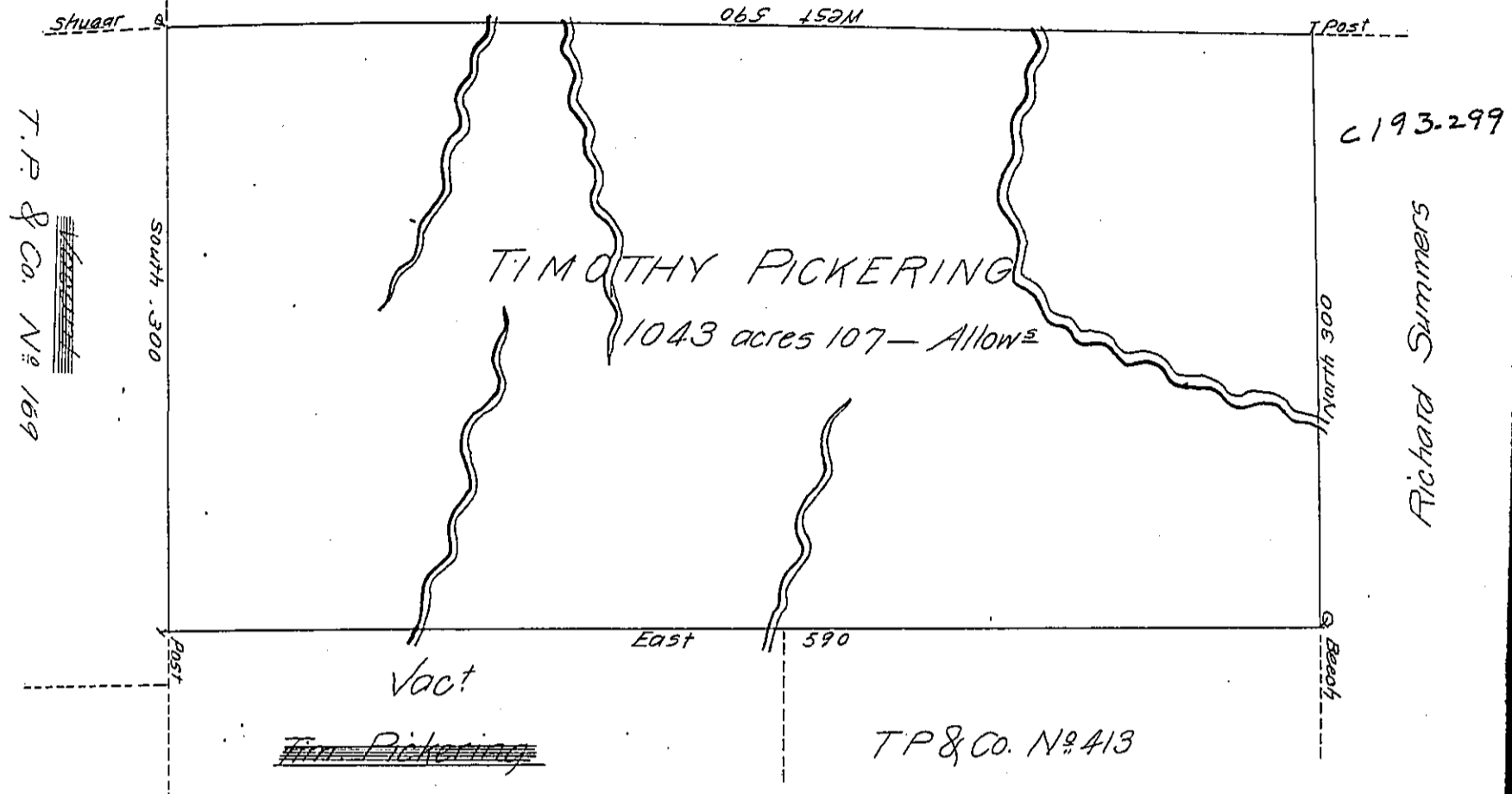


PAGE - 80

Tim. Pickering No 183

T.P. & Co. No 254



The Draught of a Tract of Land Called \_\_\_\_\_ Situate on the waters of sandy Lick Creek in the late Purchase in District Number six in the County of Northumberland Containing one thousand and Forty three acres and one Hundred and Seven Perches with the usual allowance of six P<sup>ct</sup> Cent for Roads. Surveyed on the 4<sup>th</sup> day of November 1785 in pursuance of a Warrant granted to Timothy Pickering Samuel Hodgdon Duncan Ingraham Jun<sup>r</sup> and Tench Coxe Dated at Philad. the 17<sup>th</sup> Day of May 1785 for one Thousand Acres

To John Lukens Esq.  
Surveyor General

James Potter D.S.

IN TESTIMONY that the above is a copy of the original remaining on file in the Department of Internal Affairs of Pennsylvania, made conformably to an Act of Assembly approved the 16th day of February, 1833, I have hereunto set my Hand and caused the Seal of said Department to be affixed at Harrisburg, this ninth day of June 1906

*James P. Powell*  
Secretary of Internal Affairs.